

Universal Indicator Mount

Assembly and Installation Instructions

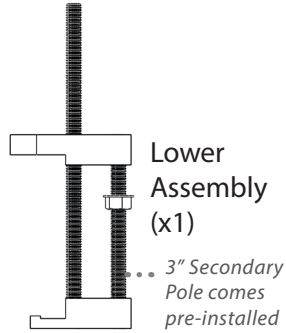
MODEL NO.
TDR-1001

Fits onto a 1.5" - 6" thick surface/Compatible with 3/8" diameter Indicator shank

In the Box

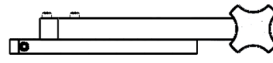


Steel Rod
(x1)



Lower
Assembly
(x1)

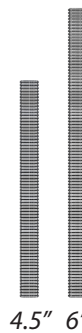
3" Secondary
Pole comes
pre-installed



Upper Assembly (x1)



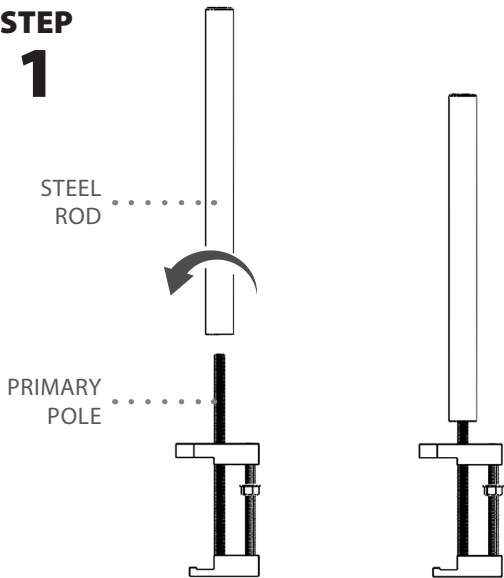
Rubber Feet with
Adhesive Backing* (x4)



Alternate
Secondary
Poles**
(x2 additional
lengths)

4.5" 6"

STEP 1

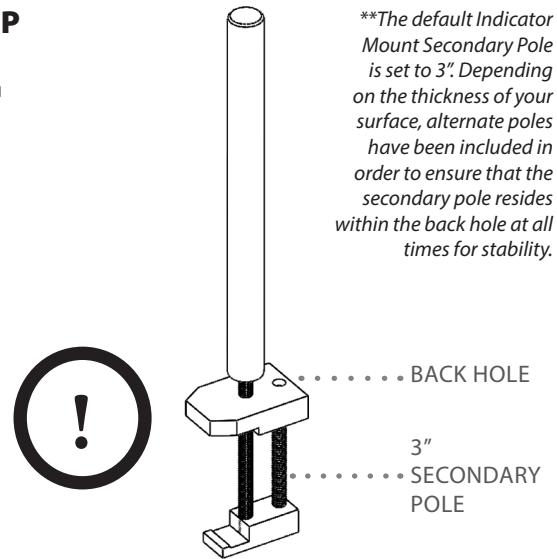


STEEL
ROD

PRIMARY
POLE

Begin assembly by screwing the steel rod onto the primary threaded pole at the top of the lower assembly.

STEP 2



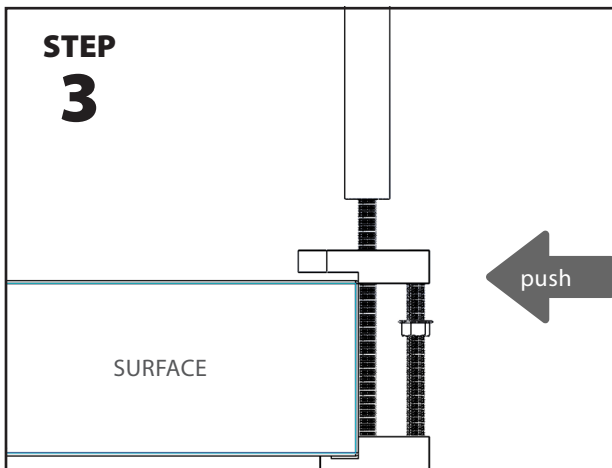
**The default Indicator Mount Secondary Pole is set to 3". Depending on the thickness of your surface, alternate poles have been included in order to ensure that the secondary pole resides within the back hole at all times for stability.

BACK HOLE

3"
SECONDARY
POLE

Make sure the back hole is aligned with the secondary threaded pole.

STEP 3

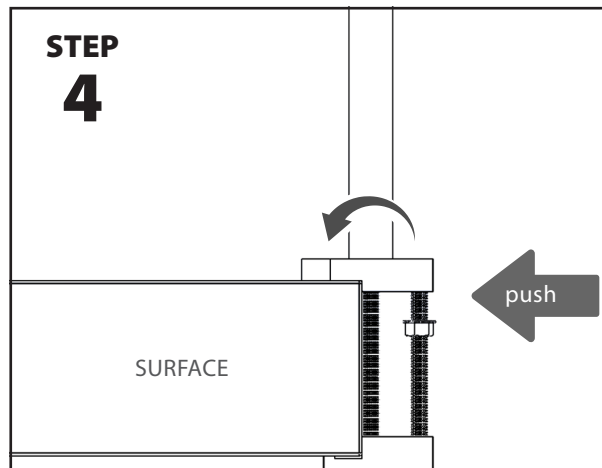


SURFACE

push

Align jaws of lower assembly with top and bottom of surface, pushing onto the surface until the side is pressed against the interior of the jaws.

STEP 4



SURFACE

push

Tighten the steel rod until firmly seated on top edge of the jaw, while continuously applying firm pressure on the back of the Indicator Mount in order to keep the surface square to the mount.

STEP 5

SURFACE

In order to finish attaching the bottom assembly to your surface, tighten the nut on the secondary pole upwards with a wrench until secure.

STEP 6

TOP ASSEMBLY

LOWER ONTO ROD HERE

SURFACE

Lower the top assembly over the steel rod to desired height.

STEP 7

KNOB

SURFACE

Secure top assembly by twisting the large knob until secure.

ADJUSTING THE UPPER ASSEMBLY

To adjust the upper assembly, loosen screws and set to desired position using the tapped holes in the lower bar, and refasten the screws. Assembly can be reversed for left- or right-handed use.

1. LOOSEN SCREWS
2. SET USING TAPPED HOLES
3. REFASTEN SCREWS

NOTE: Additional Indicator tips can be placed in storage holes as shown left. Indicator tips not included.

STEP 8

INDICATOR

Insert indicator (not included) by dropping it into the Indicator Clamp and tighten the screw with a hex key to secure.

COMPLETED VIEW

RUBBER FEET WITH ADHESIVE BACKING

ALTERNATE (STEPED SURFACE)

**If additional space is needed to slip Indicator Mount under the surface, add rubber feet with adhesive backing to each bottom corner of the surface.*